



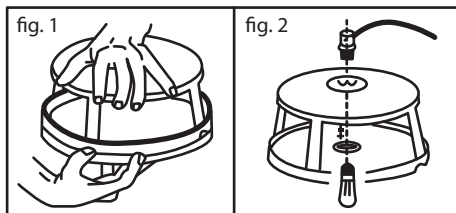
EASY TO USE INSTRUCTIONS

Follow these instructions for years of the best flea control available!

THE ULTIMATE FLEA TRAP

Choose a Location.... Household Use Only

Pick a location that is close to the area where your pet is spending the majority of time. (Near bedding, favorite resting place, garage, etc.)



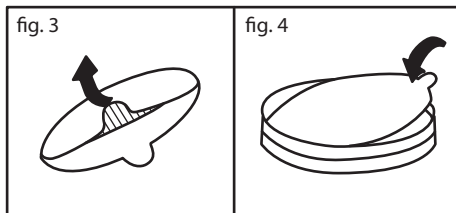
- Step 1:** Separate the top canopy of the trap from the bottom tray using thumb grips as shown. (fig. 1)
- Step 2:** Carefully place the light socket into the hole in the top of the trap canopy. (fig. 2)
- Step 3:** Secure the socket in place with the threaded bulb protector provided. Do not over tighten.
- Step 4:** Gently insert the bulb provided.

Insert the Glue Disc...

Grasp tab and remove release paper from glue disc. (fig. 3)

Place the glue disc in the bottom of the trap. (fig. 4)

Note: Glue can be cleaned from skin or any surface using vegetable oil.



Reassemble Trap...

To reassemble the trap, align the top canopy directly over the bottom tray and press down firmly.

The Ultimate Flea Trap is now ready for operation.

For best results...

- Make sure that you have removed the release paper from refill disc.
- Place trap on floor, in an area where fleas are a problem, usually where your pet spends a considerable amount of time.
- You may not be catching an abundant amount of fleas because:
 1. The population of fleas will vary from week to week.
 2. You don't have a bad infestation at this time, but leave your flea trap on 24 hours a day as a preventative measure. Catching a new batch of fleas before they can reproduce is a very effective way to control flea problems.

IMPORTANT

Change the refill disc every 2 to 4 weeks, regardless of the amount of fleas trapped. A fresh disc is more effective than a used one.

PRECAUTIONARY NOTES

- KEEP OUT OF REACH OF CHILDREN
- Always unplug the trap before replacing refills or light bulbs
- Replace light bulb with a standard candelabra 7 watt bulb, 120V.
- Protect your pets against electrical shock. DO NOT let your pets chew or bite the electrical cord.

Refills available from your area distributor/retailer.

WARRANTY

The Ultimate Flea Trap is warranted to be free from defects in material and workmanship under normal use for a period of one year from the date of purchase except for light bulb and flea paper. Return defective Flea Trap to place of purchase for replacement, along with proof-of-purchase. Warranty does not apply to defects resulting from accidents, abuse or misuse.

Instructions pertaining to a risk of fire, electric shock, or injury to persons:

IMPORTANT SAFETY INSTRUCTIONS WARNING

When using electric appliances, basic precautions should always be followed, including the following:

- a) Read all the instructions before using the appliance.
- b) To reduce the risk of injury, close supervision is necessary when the product is used near children.
- c) Do not contact moving parts.
- d) Do not use outdoors.
- e) Do not unplug by pulling on cord. To unplug, grasp the plug, not the cord.
- f) Unplug from outlet when not in use and before service or cleaning.
- g) Do not operate any product with a damaged cord or plug, or after the product malfunctions or is dropped or damaged in any manner. Return product to the nearest authorized service facility for examination, repair, or electrical or mechanical adjustment.
- h) To reduce the risk of electrical shock, do not put product in water or other liquid. Do not place or store product where it can fall or be pulled into a tub or sink.
- i) Save all safety and operating instructions for future reference.
- j) To reduce the risk of electric shock, this appliance has a polarized plug (one blade is wider than the other.) This plug will fit in a polarized outlet only one way. If the plug does not fit fully in the outlet, reverse the plug. If it still does not fit, contact a qualified electrician to install the proper outlet. Do not change the plug in any way. Note: item j) is only applied for those models which have the polarized plug.

SAVE THESE INSTRUCTIONS